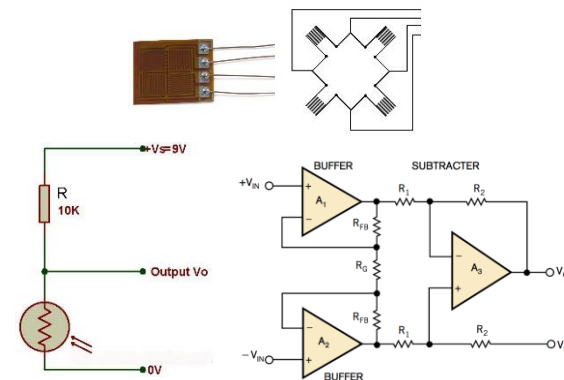
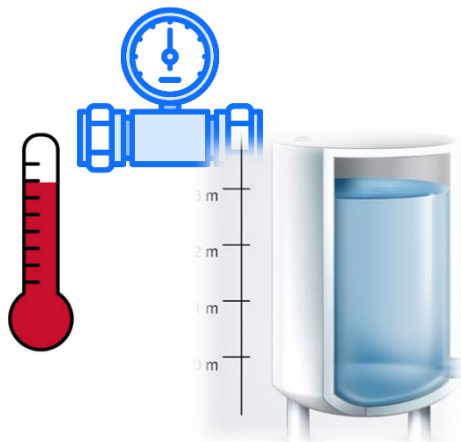
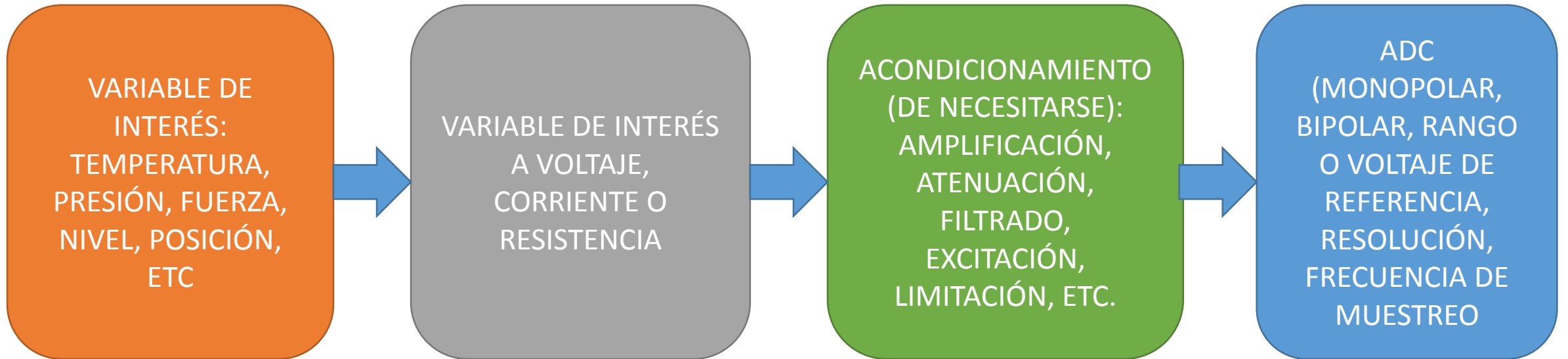


SISTEMA DE ADQUISICIÓN DE DATOS

ASPECTOS PRÁCTICOS

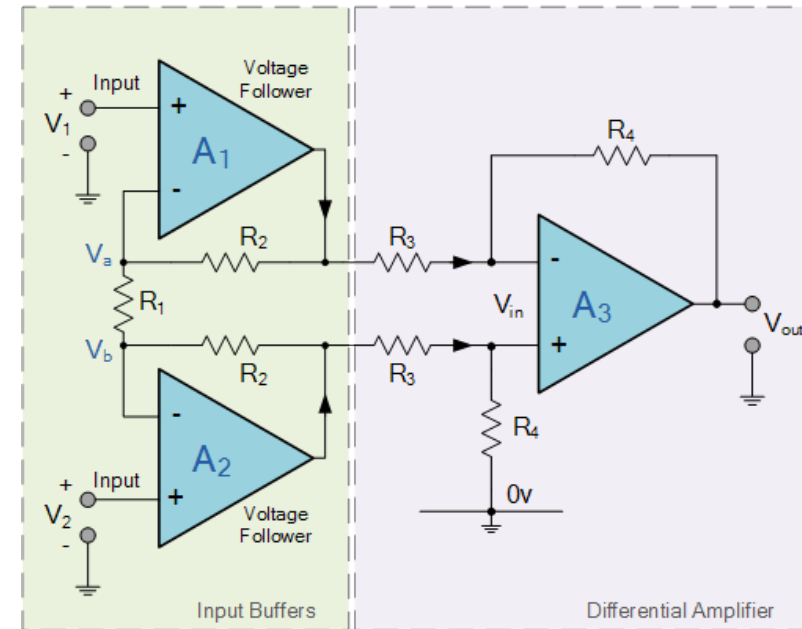
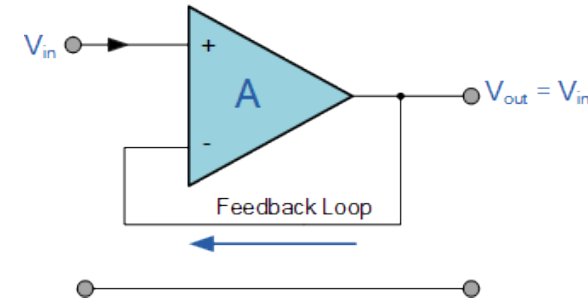
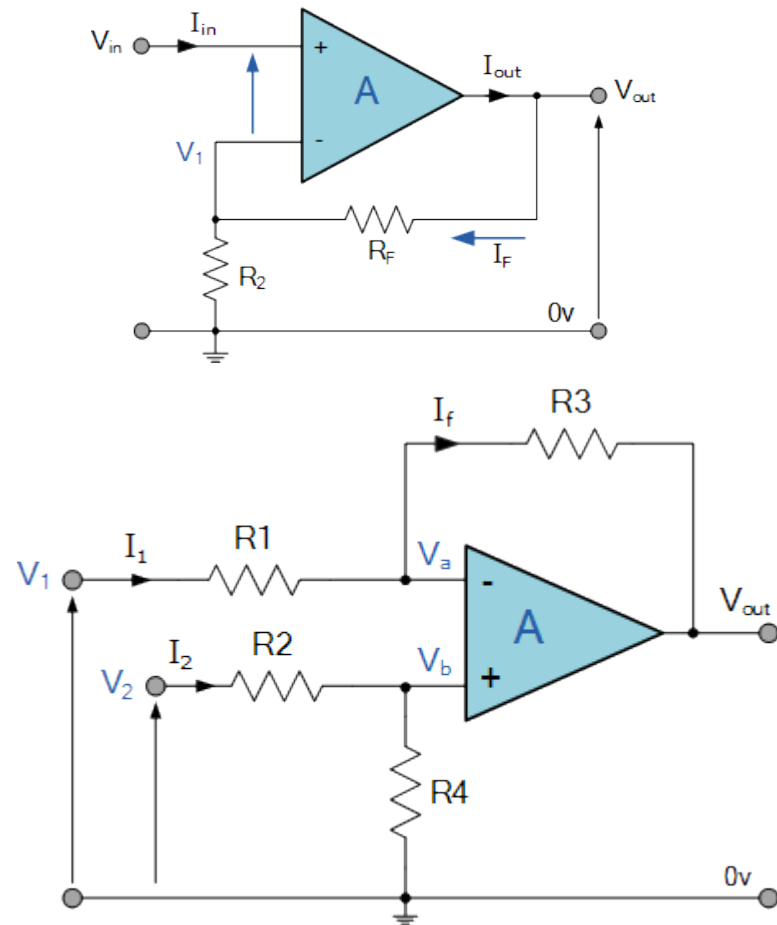


EL SISTEMA DE ADQUISICIÓN DE DATOS



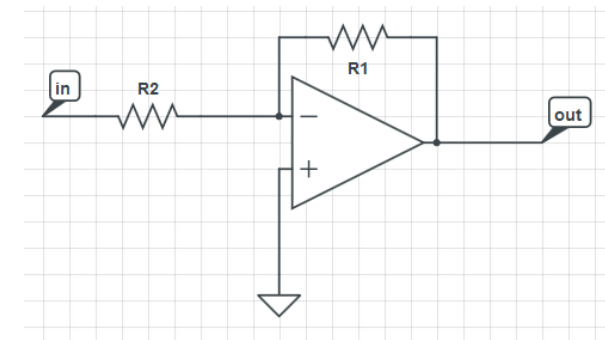
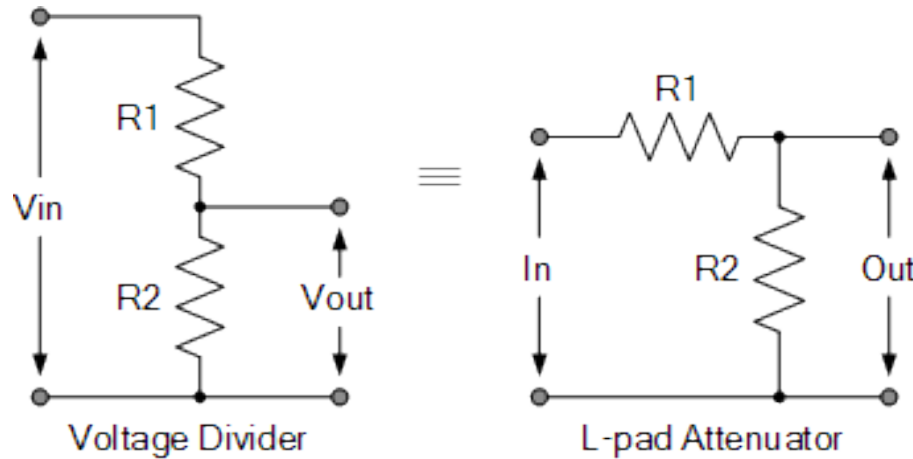
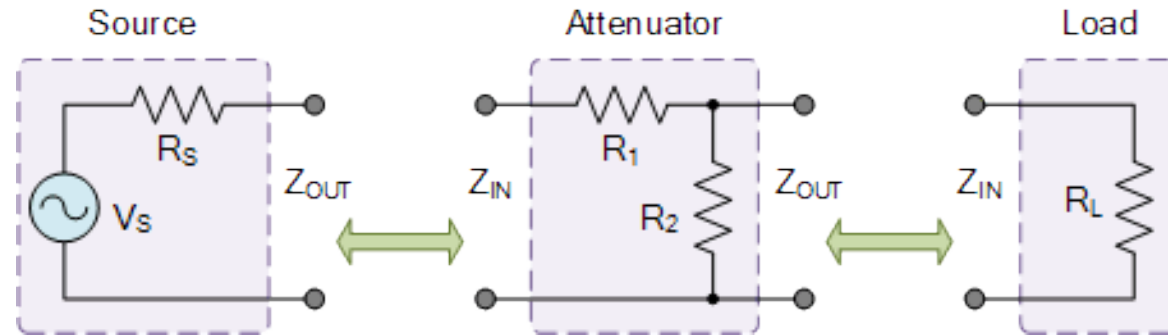
ACONDICIONAMIENTO DE LA SEÑAL

Amplificación



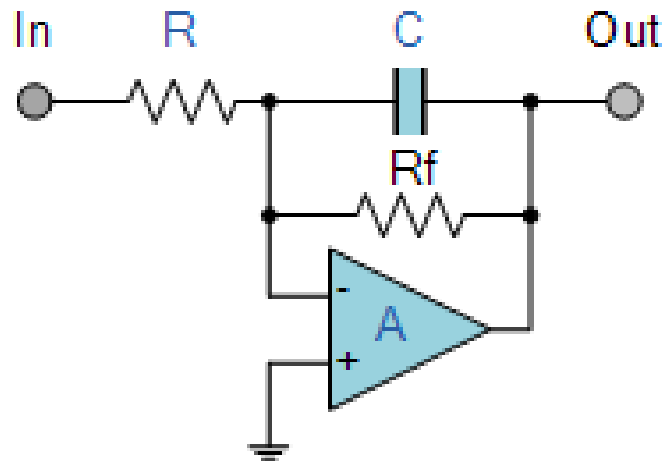
ACONDICIONAMIENTO DE LA SEÑAL

Reducción/atenuación

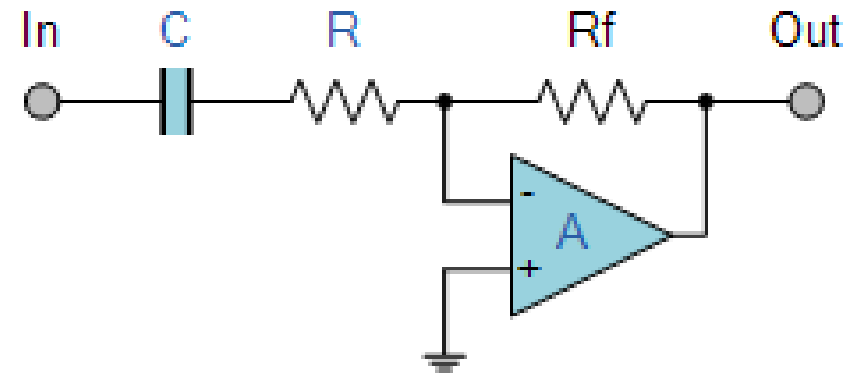


ACONDICIONAMIENTO DE LA SEÑAL

Filtrado



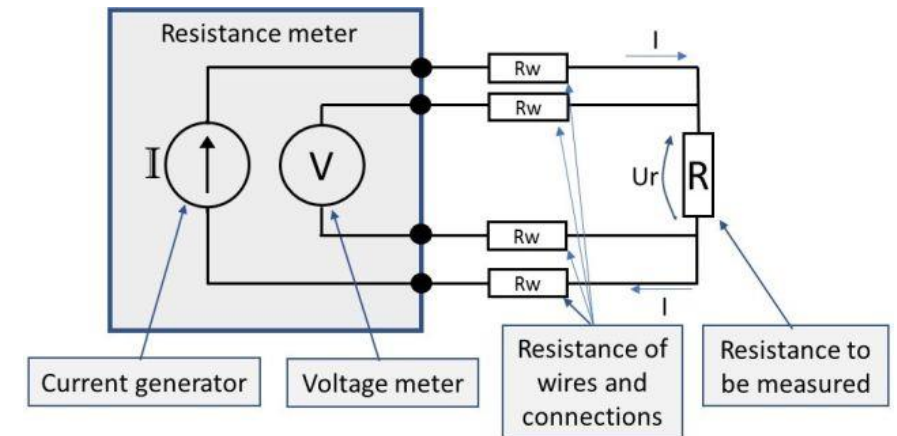
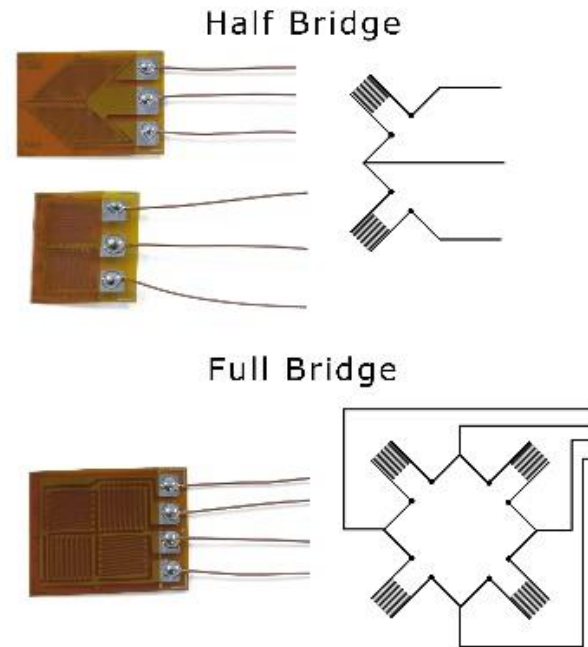
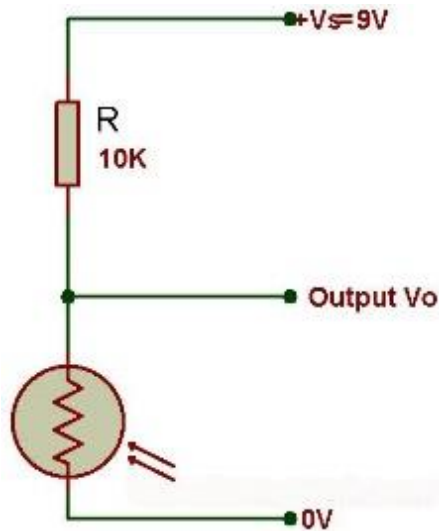
Low Pass Active Filter



High Pass Active Filter

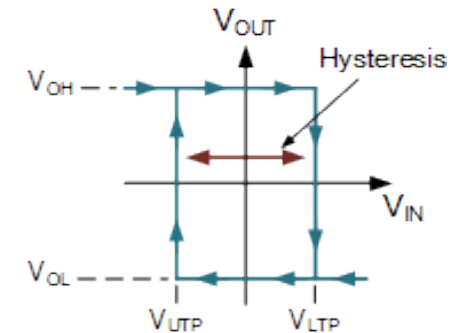
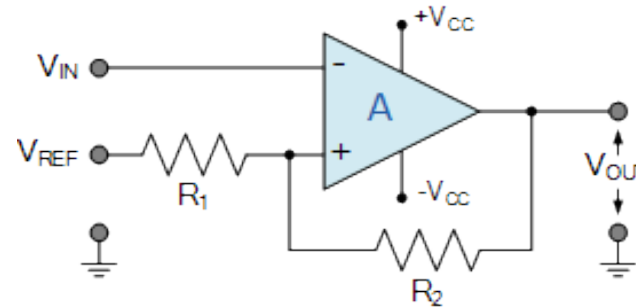
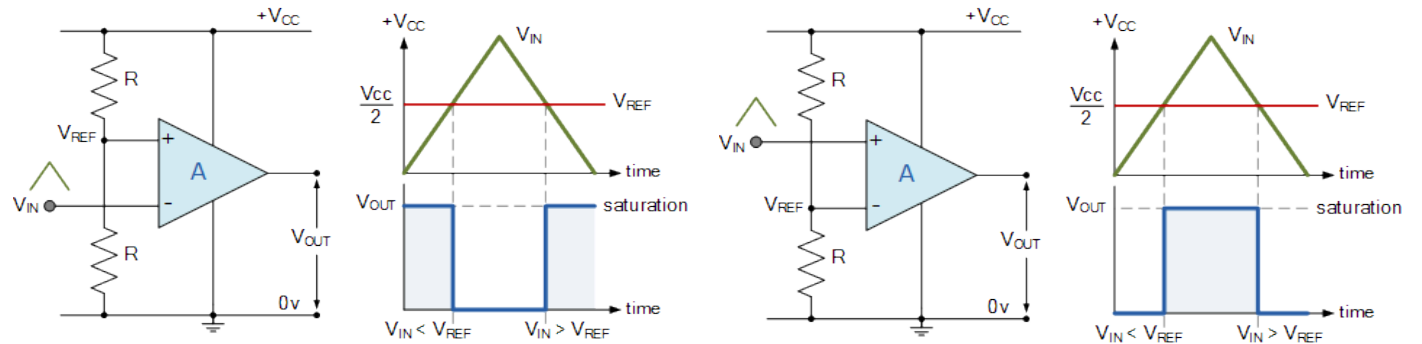
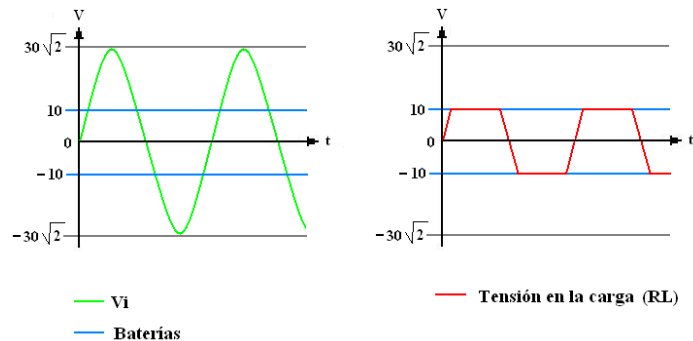
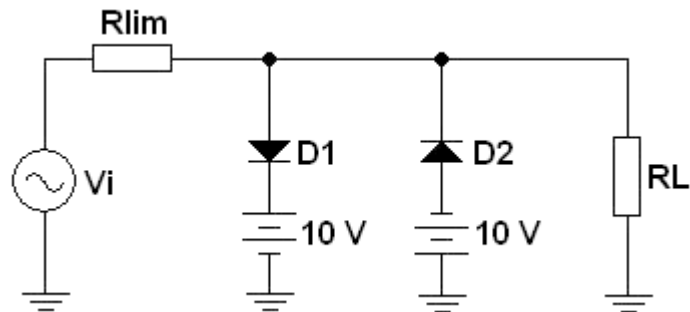
ACONDICIONAMIENTO DE LA SEÑAL

Excitación/divisor de voltaje/puentes

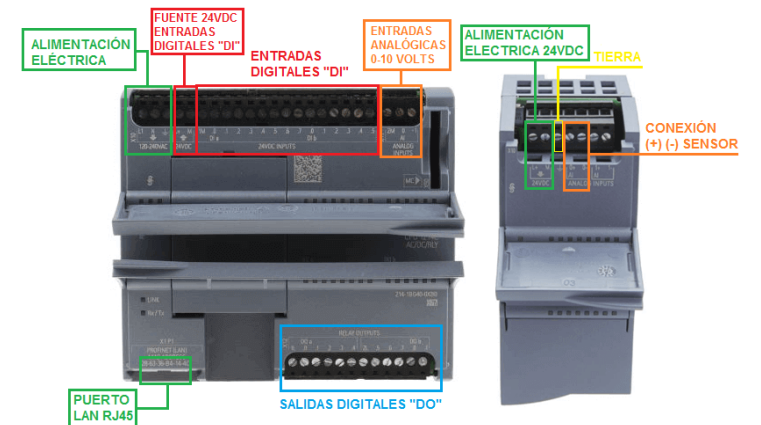
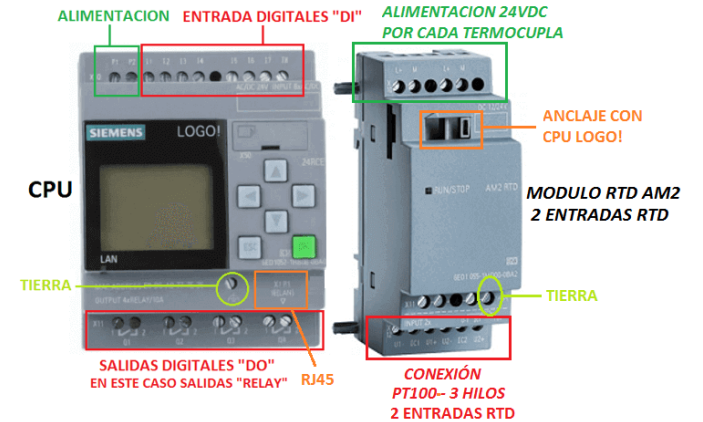
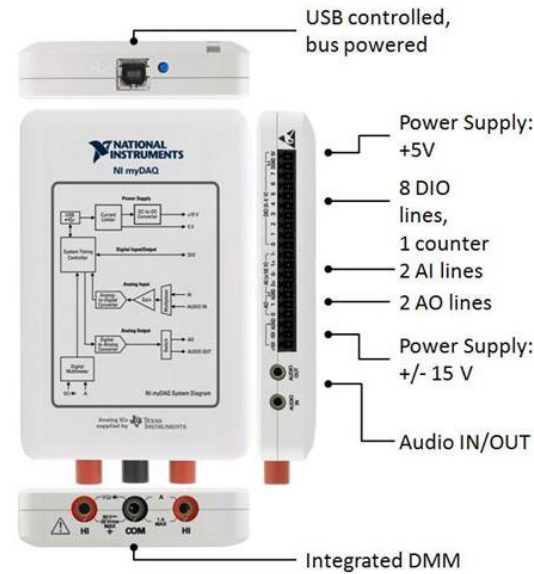


ACONDICIONAMIENTO DE LA SEÑAL

Limitador, comparador, linealización, compensación, etc.



ENTRADA ANALÓGICA (ADC)



SELECCIÓN

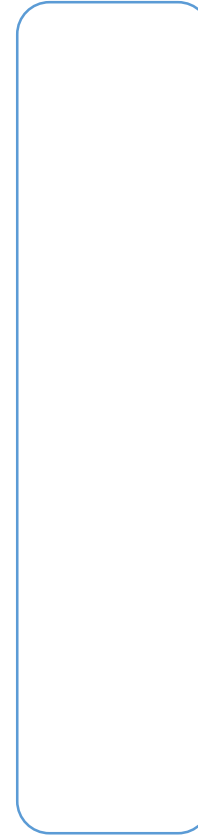
VARIABLE DE INTERÉS
RANGO | RANGO
POSIBLE | DE INTERÉS



TRANSDUCTOR
RANGO | RANGO
DE ENTRADA | DE SALIDA



ACONDICIONAMIENTO
ENTRADA | SALIDA



ADC
ENTRADA | SALIDA



¿PREGUNTAS?

